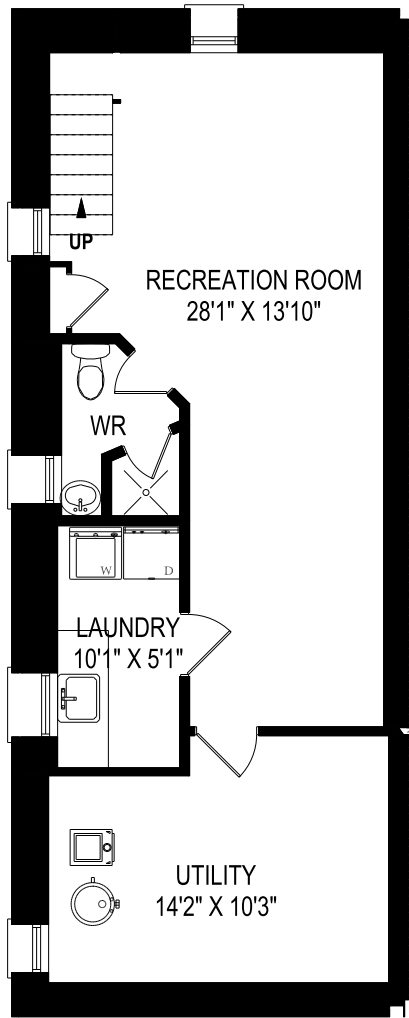
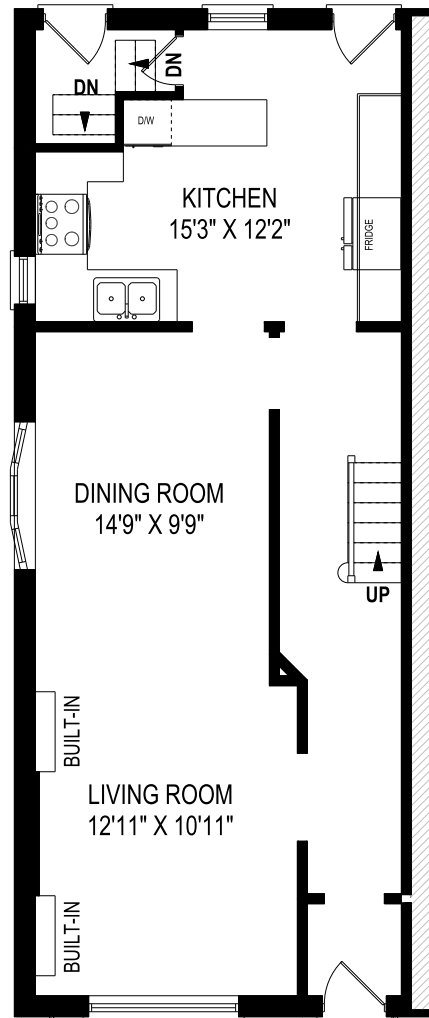


223 Ashworth Avenue, Toronto

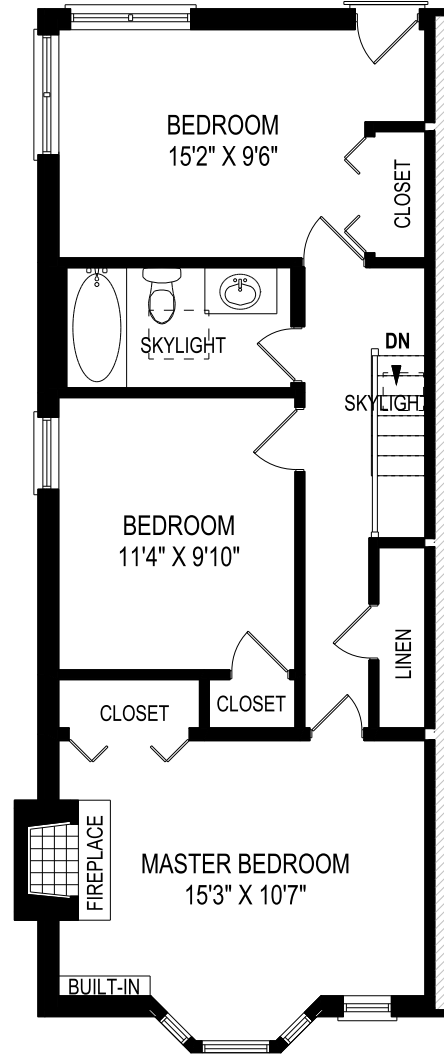
FLOOR PLAN



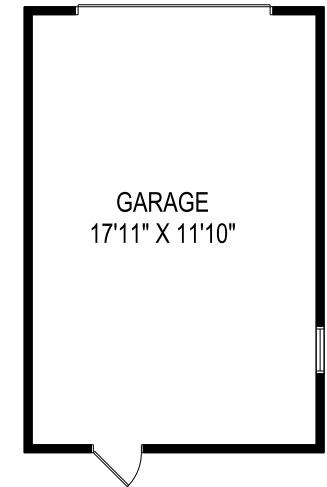
LOWER LEVEL
695 SQUARE FEET



MAIN FLOOR
695 SQUARE FEET
CEILING HEIGHT 8'9"



SECOND FLOOR
702 SQUARE FEET
CEILING HEIGHT 8'6"



January 31, 2019
Note: Although measurements and area believed to be accurate they should be considered approximate. This drawing was prepared by Plans4U for the sole benefit and use by the client. No third party may rely on this drawing without the receipt of reliance letter from Plans4U