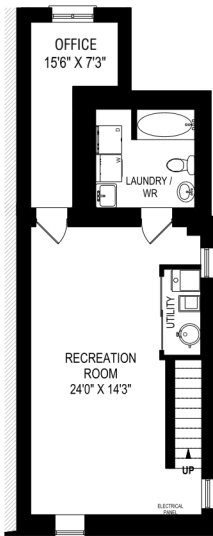


120 Drayton Avenue, Toronto

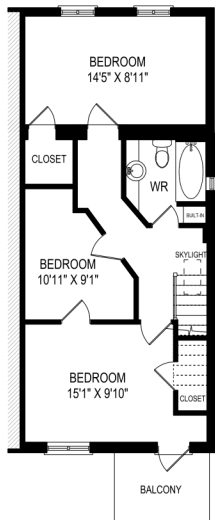
FLOOR PLAN



LOWER LEVEL
674 SQUARE FEET



MAIN FLOOR
674 SQUARE FEET



SECOND FLOOR
608 SQUARE FEET
CEILING HEIGHT 8'2"

June 17, 2019

Note: Although measurements and areas are believed to be accurate they should be considered approximate. This drawing was prepared by Plans4U for the sole benefit and use by the client. No third party may rely on this drawing without the receipt of reliance letter from Plans4U.