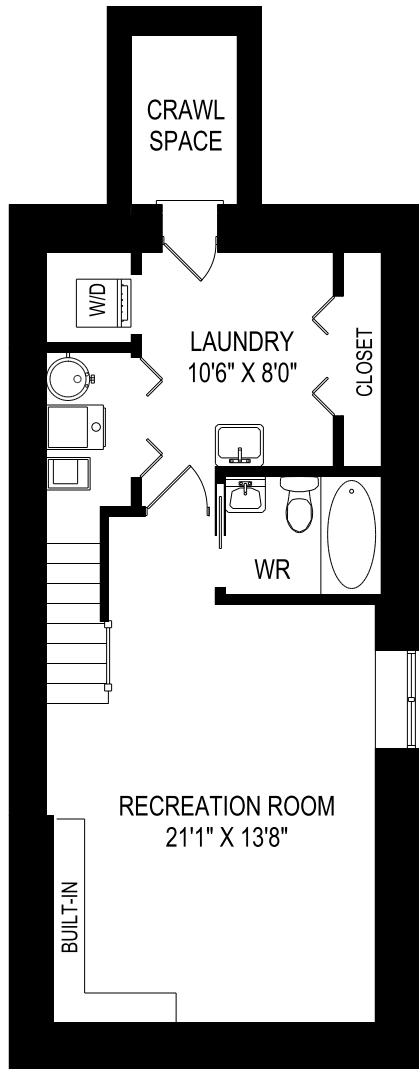
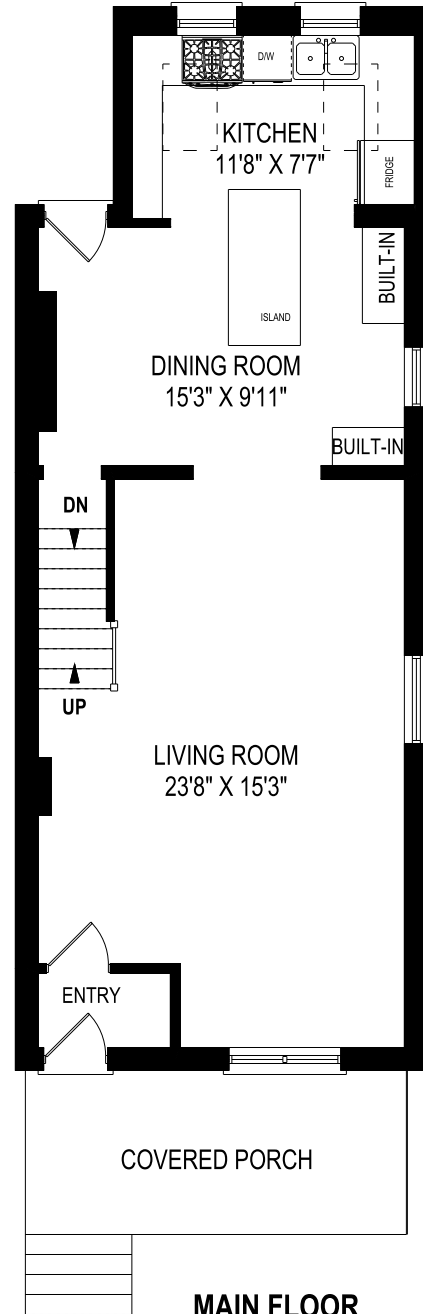


16 Tacoma Avenue, Toronto

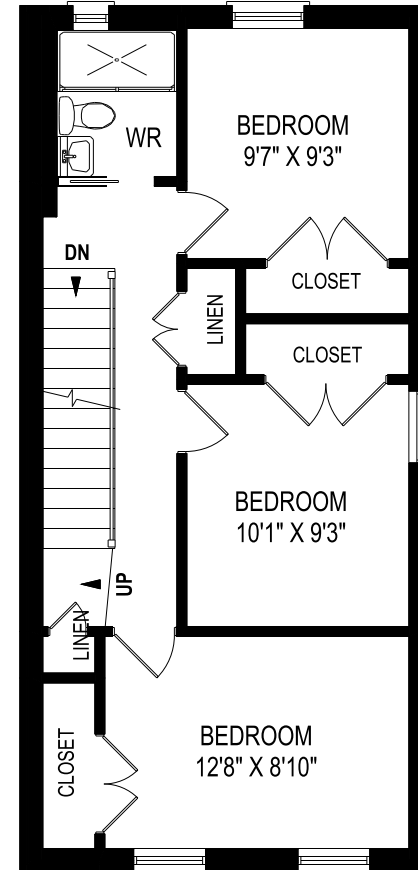
FLOOR PLAN



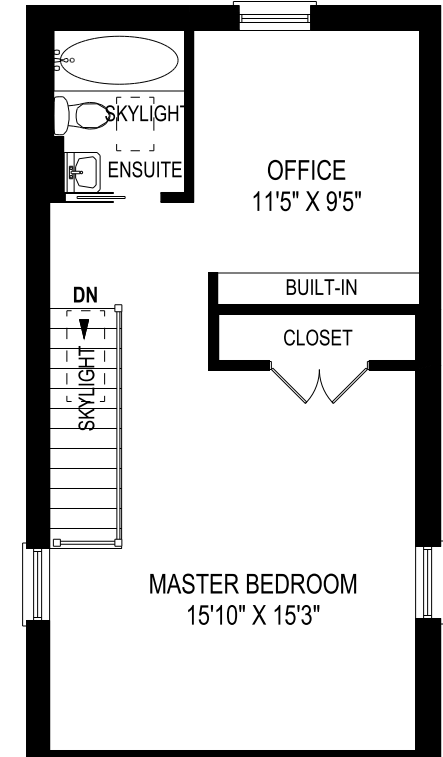
LOWER LEVEL
622 SQUARE FEET



MAIN FLOOR
731 SQUARE FEET
CEILING HEIGHT 8'6"



SECOND FLOOR
622 SQUARE FEET
CEILING HEIGHT 8'4"



THIRD FLOOR
543 SQUARE FEET
CEILING HEIGHT 8'1"