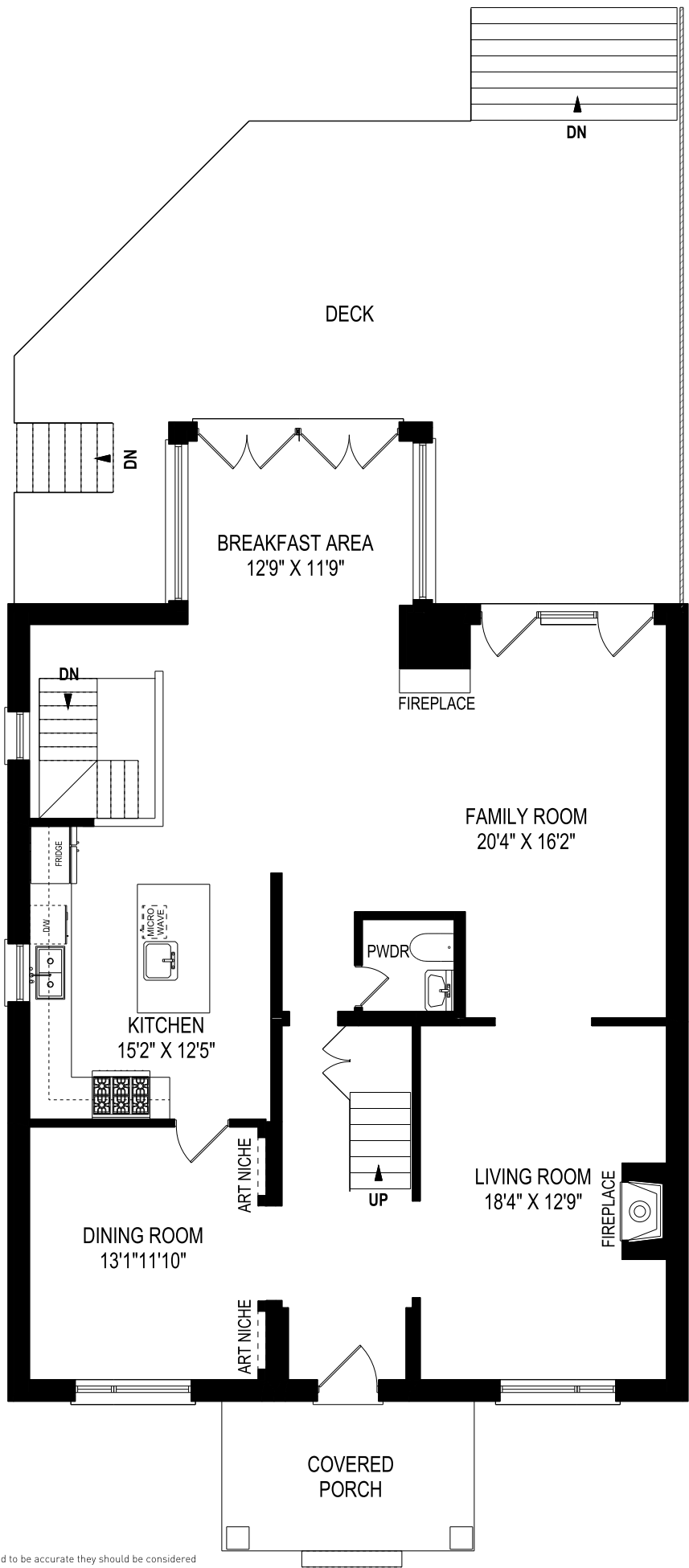


197 Lonsmount Drive, Toronto

FLOOR PLAN

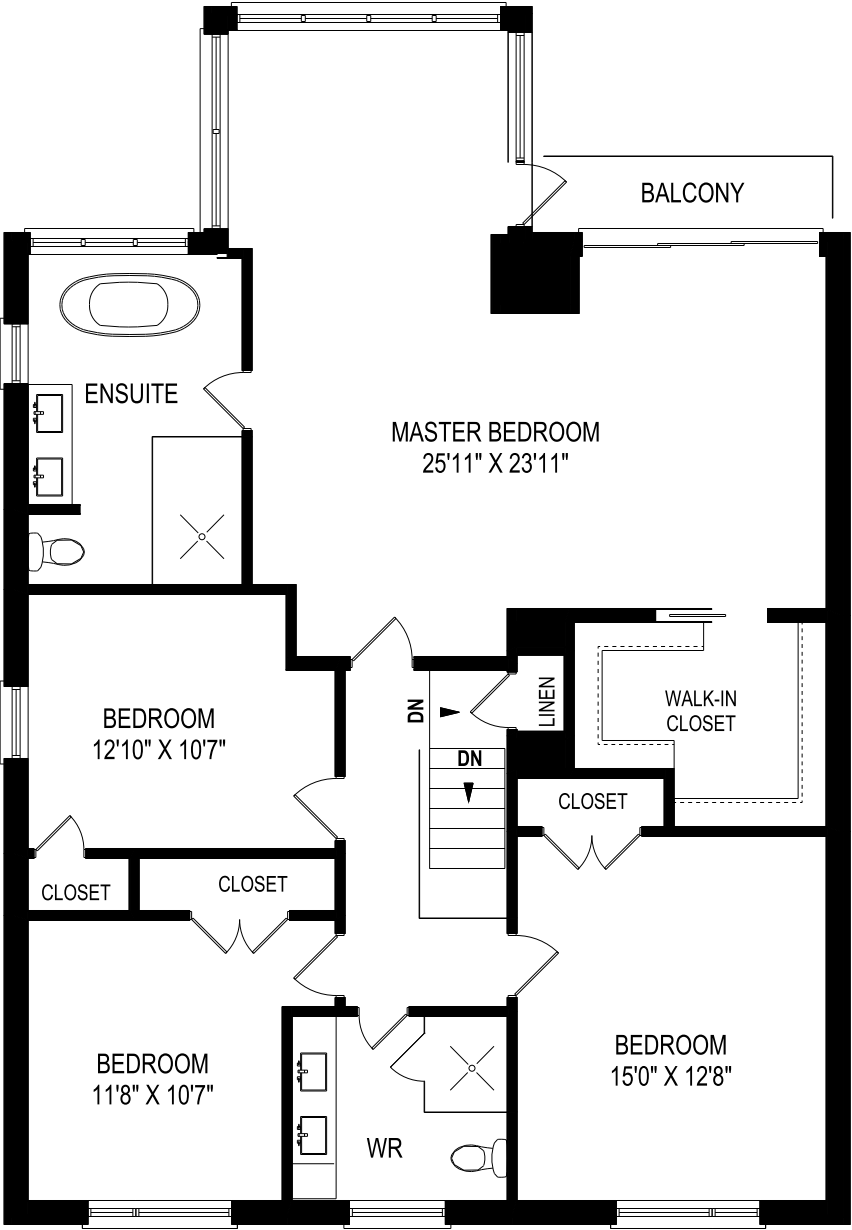


CEILING HEIGHT 8'3"
MAIN FLOOR - 1586 SQUARE FEET



197 Lonsmount Drive, Toronto

FLOOR PLAN



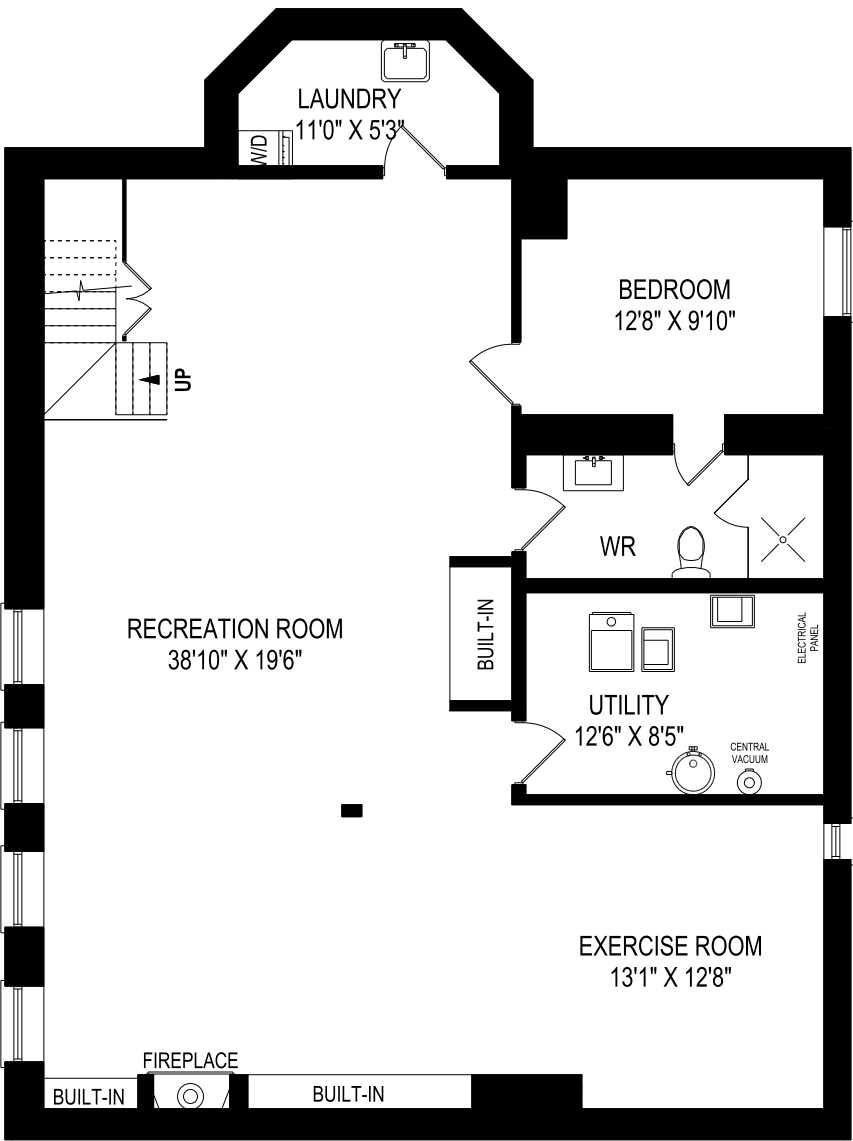
CEILING HEIGHT 8'2"

SECOND FLOOR - 1586 SQUARE FEET



197 Lonsmount Drive, Toronto

FLOOR PLAN



CEILING HEIGHT 7'4"

LOWER LEVEL - 1527 SQUARE FEET

