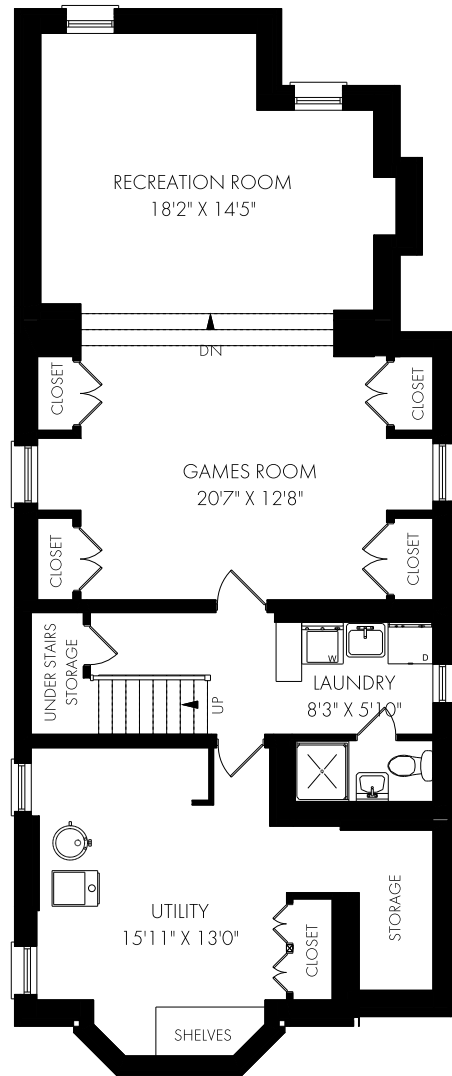
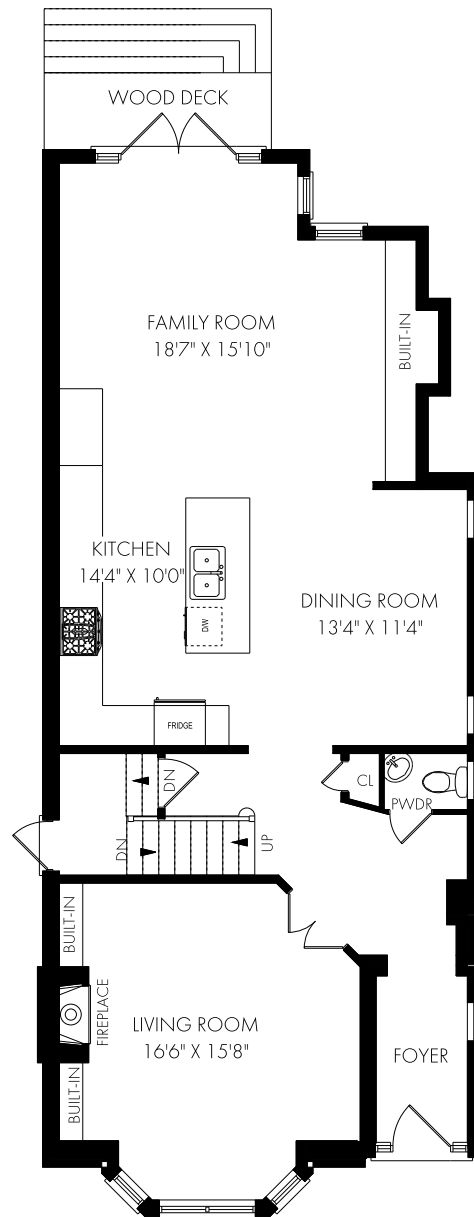


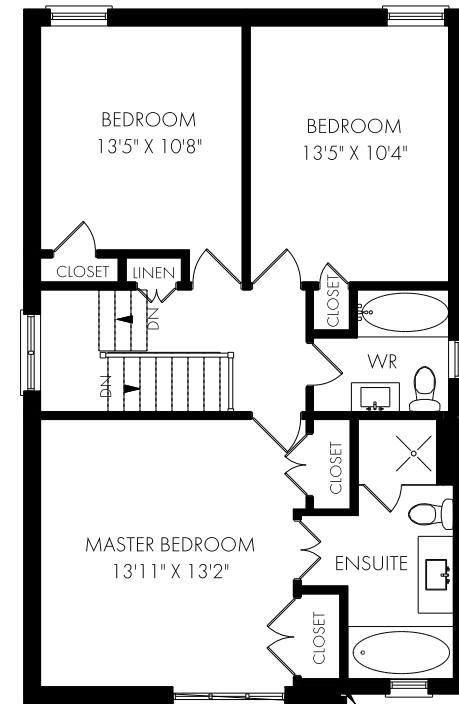
FLOOR PLAN



LOWER LEVEL - 1171 SQUARE FEET



MAIN FLOOR - 1171 SQUARE FEET



SECOND FLOOR - 829 SQUARE FEET

Monday, June 1, 2020

Note: Although measurements and area believed to be accurate they should be considered approximate. This drawing was prepared by Plans4U for the sole benefit and use by the client. No third party may rely on this drawing without the receipt of reliance letter from Plans4U

PLANS4U © 2019 PLANSFORYOU

PlansForYou.ca/ info@plansforyou.ca /416.999.5096