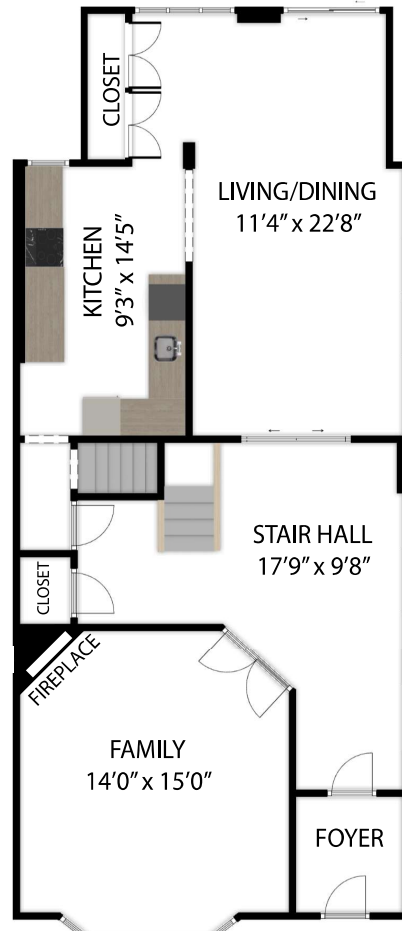
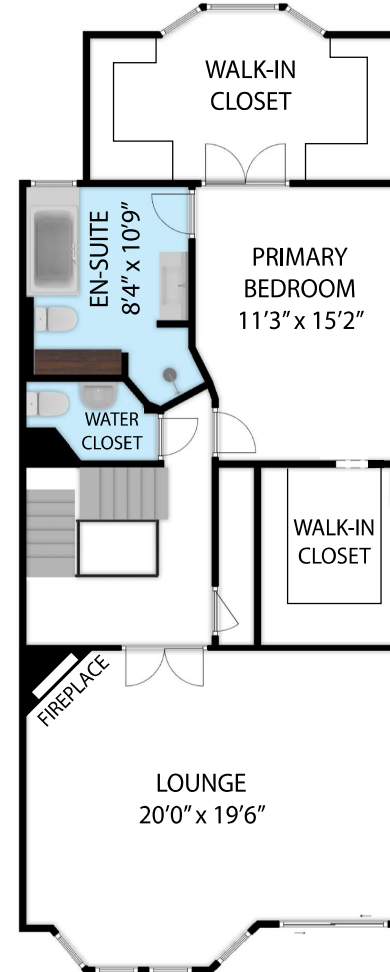


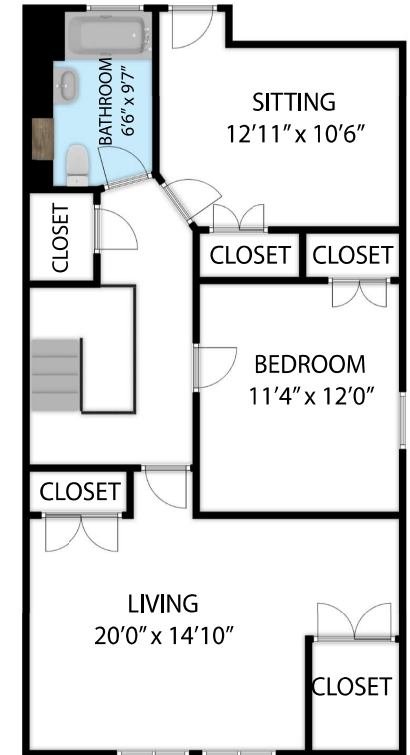
LOWER LEVEL  
864 SQ.FT



MAIN LEVEL  
1,051 SQ.FT



UPPER LEVEL  
1,037 SQ.FT



TOP LEVEL  
841 SQ.FT

98 Farnham Avenue, Toronto M4V 1H4  
TOTAL APPROX. FLOOR AREA 3,793 SQ.FT

Whilst every attempt has been made to ensure the accuracy of the floor plan contained here, measurements of doors, windows, rooms and any other items are approximate and no responsibility is taken for any error, omission, or misstatement. This plan is for illustrative purposes only and should be used as such by any prospective purchaser.

